

ERASMUS PLACEMENT EXPERIENCE: IMAGECAT INC.



Daniele De Vecchi – Matricola N° 404467

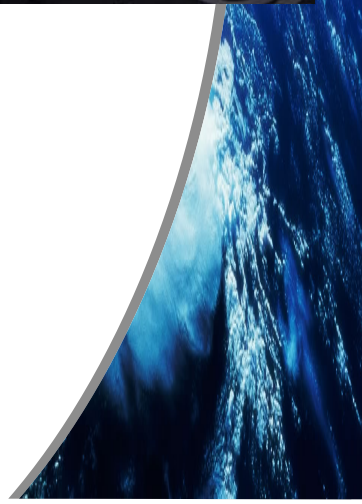
Mail: daniele.devecchi03@universitadipavia.it

WHERE, WHEN AND, MOST OF ALL, WHY?

- Where: ImageCat UK office in Ashtead (till August 2012), new office in Guildford
- When: From June to September 2012
- Why:
 - Lifetime experience
 - Very interesting job
 - Independence
 - Improve English skills



UK – THE GREAT BRITISH SUMMER





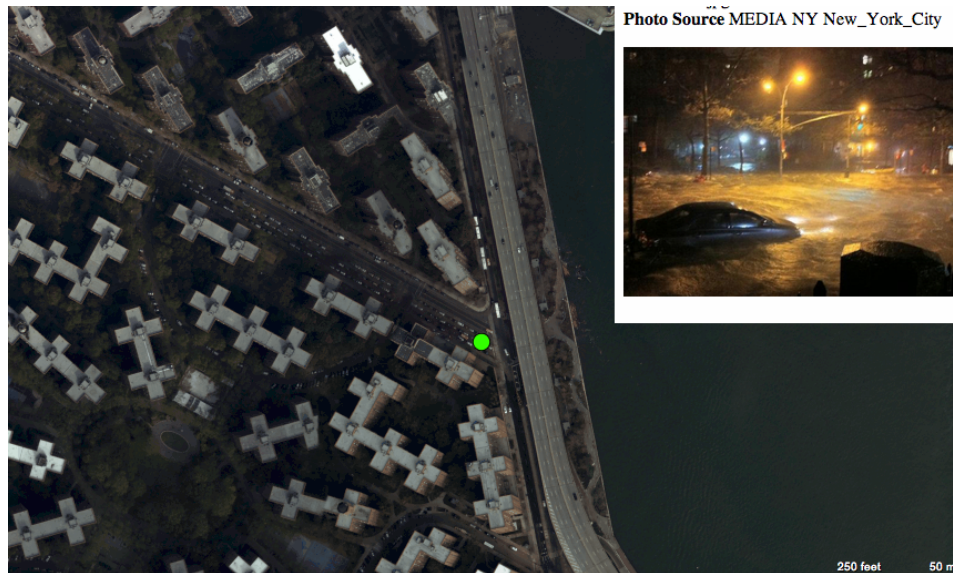
IMAGECAT INC.

- ◉ Headquartered in Long Beach (California, USA) and in Guildford (UK)
- ◉ Risk management company
 - CAT response
 - Reconstruction monitoring
 - Research



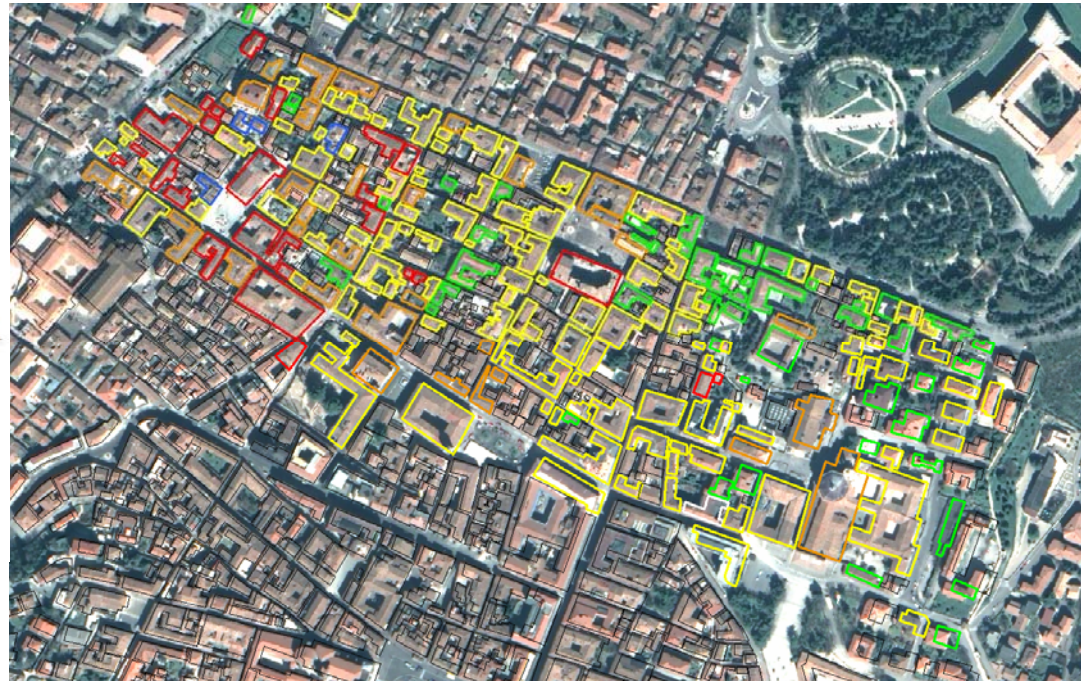
CROWDSOURCING

- ⦿ Contribution from a large group of people in services, ideas and contents
- ⦿ In remote sensing crowdsourcing is becoming a fundamental key:
 - Ground-level pictures are useful in damage assessment
 - A great amount of data can be analyzed faster



L'AQUILA TEST CASE

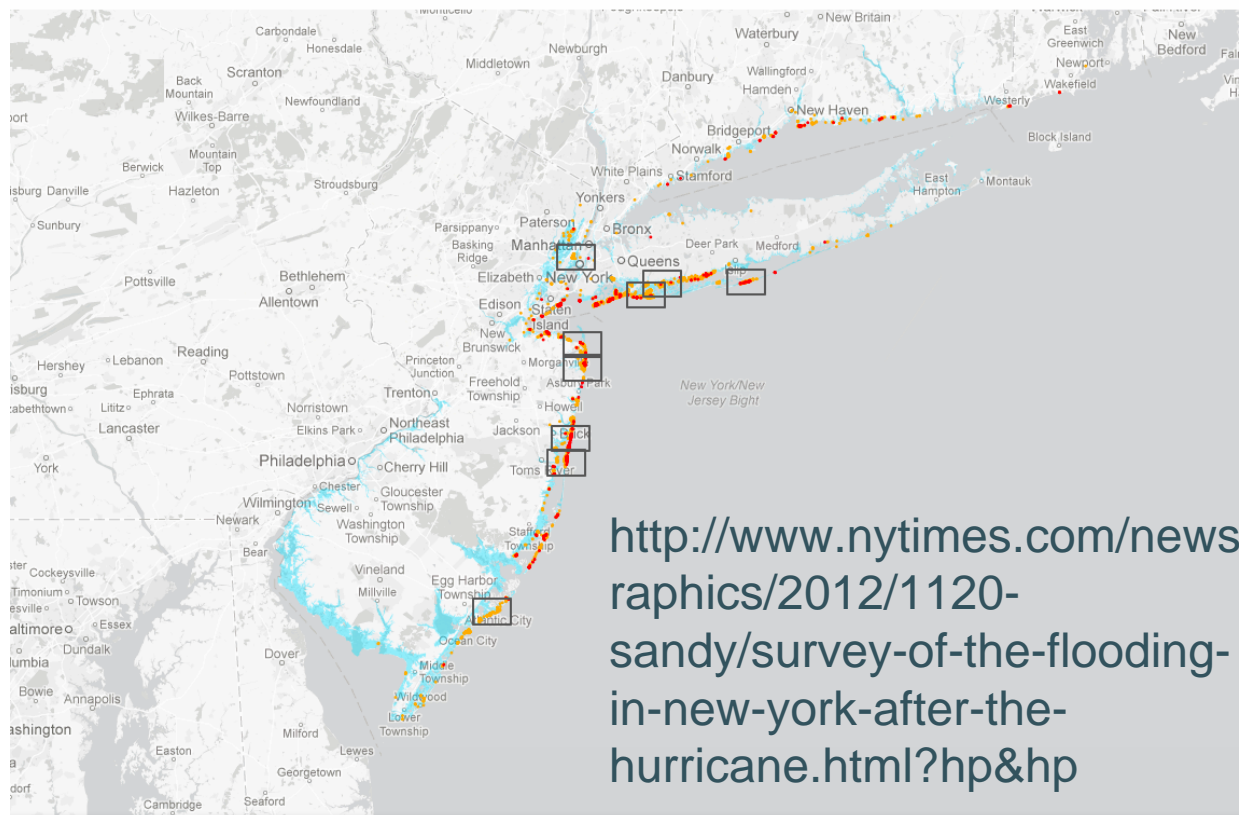
- Ground-level images used as a crowdsourced environment
- Damage assessment from ground level – optical data – radar data
- Recovery database in order to monitor the recovery using the GEM taxonomy



HURRICANE ISAAC & HURRICANE SANDY

- Involved in damage assessment from Hurricane Isaac (September 2012)
- Involved in damage assessment from Hurricane Sandy (November 2012)

Surveying the Destruction Caused by Hurricane Sandy



<http://www.nytimes.com/newsgraphics/2012/1120-sandy/survey-of-the-flooding-in-new-york-after-the-hurricane.html?hp&hp>

Hurricane Sandy came at the New York metropolitan region directly, a frontal assault of wind and waves along hundreds of miles of the coast. More than 900 buildings were destroyed, and at least another 12,000 sustained major damage, according to initial estimates by the Federal Emergency Management Agency.